



Conversion & Extension

A proposal linking three agricultural barns to form a live/ work unit in conjunction with the re-use of derelict farmland.

The existing buildings are in close to original condition and our approach was been to retain the existing character and setting of the old farmyard as far as possible whilst accommodating the necessary alterations to access and boundaries. Where additions are required, the character of these is in contrast to the original construction whilst materials and form respond to the context of the existing.

The proposed layout incorporates a variety of spaces maximising the flexibility of future use. Ground levels are exploited to create 2 storeys within the southern end of the long barn, incorporating a farm office having an independent entrance.

The north end of the long barn forms an open plan living/ dining area at the existing floor level mid height between the 2 storeys.

The existing annexe at the northern end of the barn is to be re-built in

stone walls to the east elevation. A new opening in the barn gable wall will extend out into a kitchen extension dug into the bank, bounded to the east by the re-built section of stone wall and largely glazed to the west. A new combined flue and ventilation stack positioned centrally marks the transition between old and new structures.

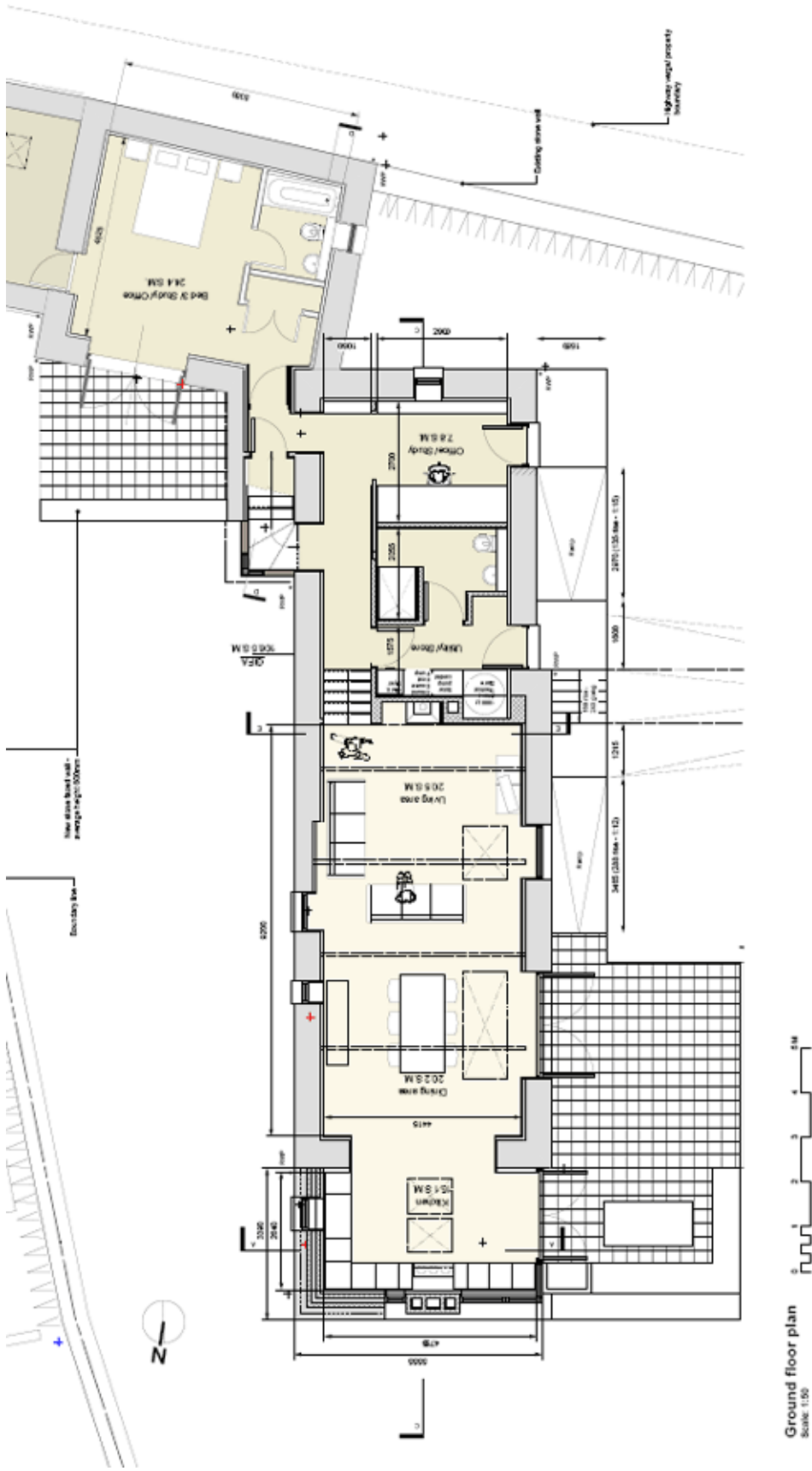
To avoid the necessity of a more substantial addition linking the two barns, and make use of the existing external stone stair, it is enclosed with a timber structure arising from the stone walls. Windows at the corner and junction with the existing wall emphasise the distinction between the two structures. The new roof is formed by extending the existing slated pitch of the long barn to meet two new lead covered pitches forming a valley aligned with the existing roof junction. Untreated vertical timber cladding and minimal framed glazing in conjunction with the lead and slate roofing will provide a subtle intervention making functional use of an original feature without diluting its character.



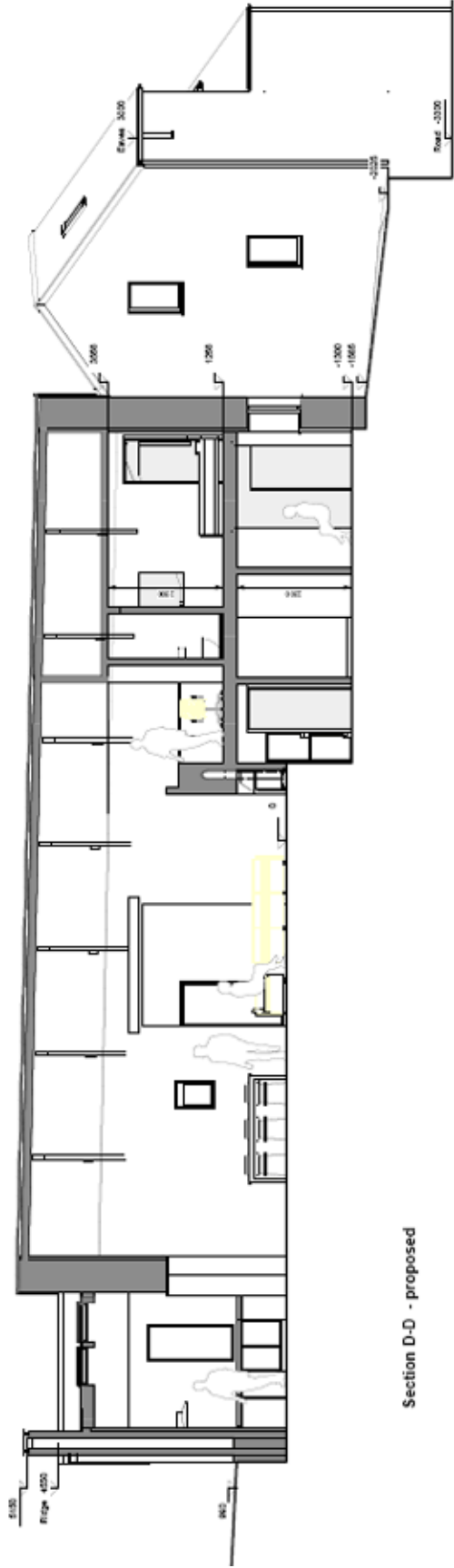
A new chimney at the junction of the original barn with the later addition allows for biomass heating and thermal store. This is positioned to minimise shadowing of solar collector arrays either side. The existing windows are mainly metal-framed additions. Being an

agricultural building, there is no obvious reference appropriate to a domestic context, therefore all new windows are set within deep reveals with minimal sashes of composite aluminium and timber construction.





Ground floor plan
SCALE: 1:50



Section D-D - proposed